

Obvious & Hidden Threats in the Facebook Social Network

A Practical Methodological Framework of the Study

Zlatogor Minchev¹ & Plamen Gatev²

¹Institute of ICT/Institute of Mathematics & Informatics

²Institute of Neurobiology

BULGARIAN ACADEMY OF SCIENCES



June 29, 2012

Int. Conf. on Informational Modelling

Varna, Bulgaria

Outline

- ☐ **Studied Environment**
- ☐ **Methodological Context**
- ☐ **Experimental Set-ups**
- ☐ **Results**
- ☐ **Discussion**
- ☐ **What's next?**

Studied Environment



- Over 901 M monthly active users;
- More than 20 % below 18 years;
- Available in more than 70 languages.

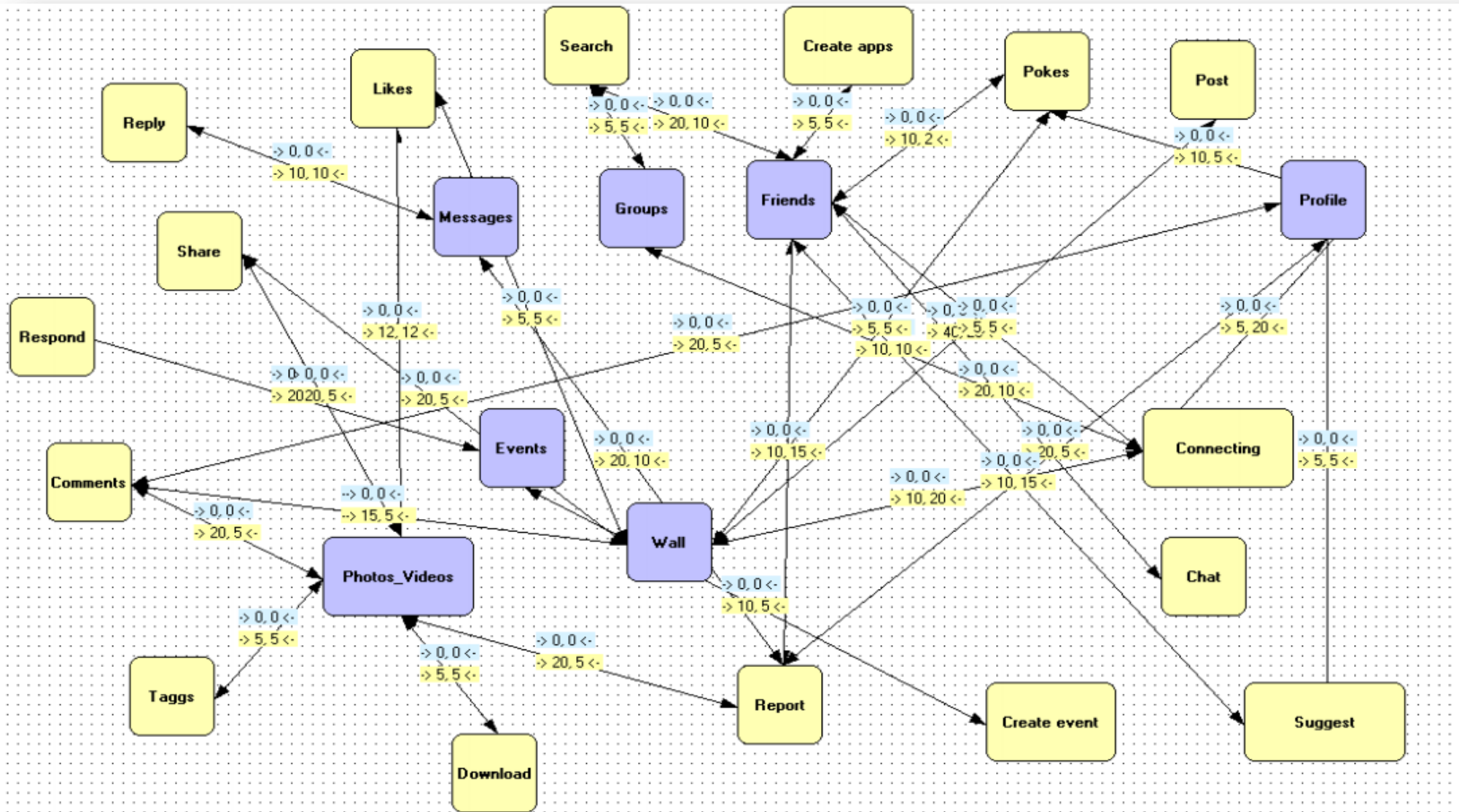
<http://newsroom.fb.com/Key-Facts/Statistics-8b.aspx>

<http://en.wikipedia.org/wiki/Facebook>

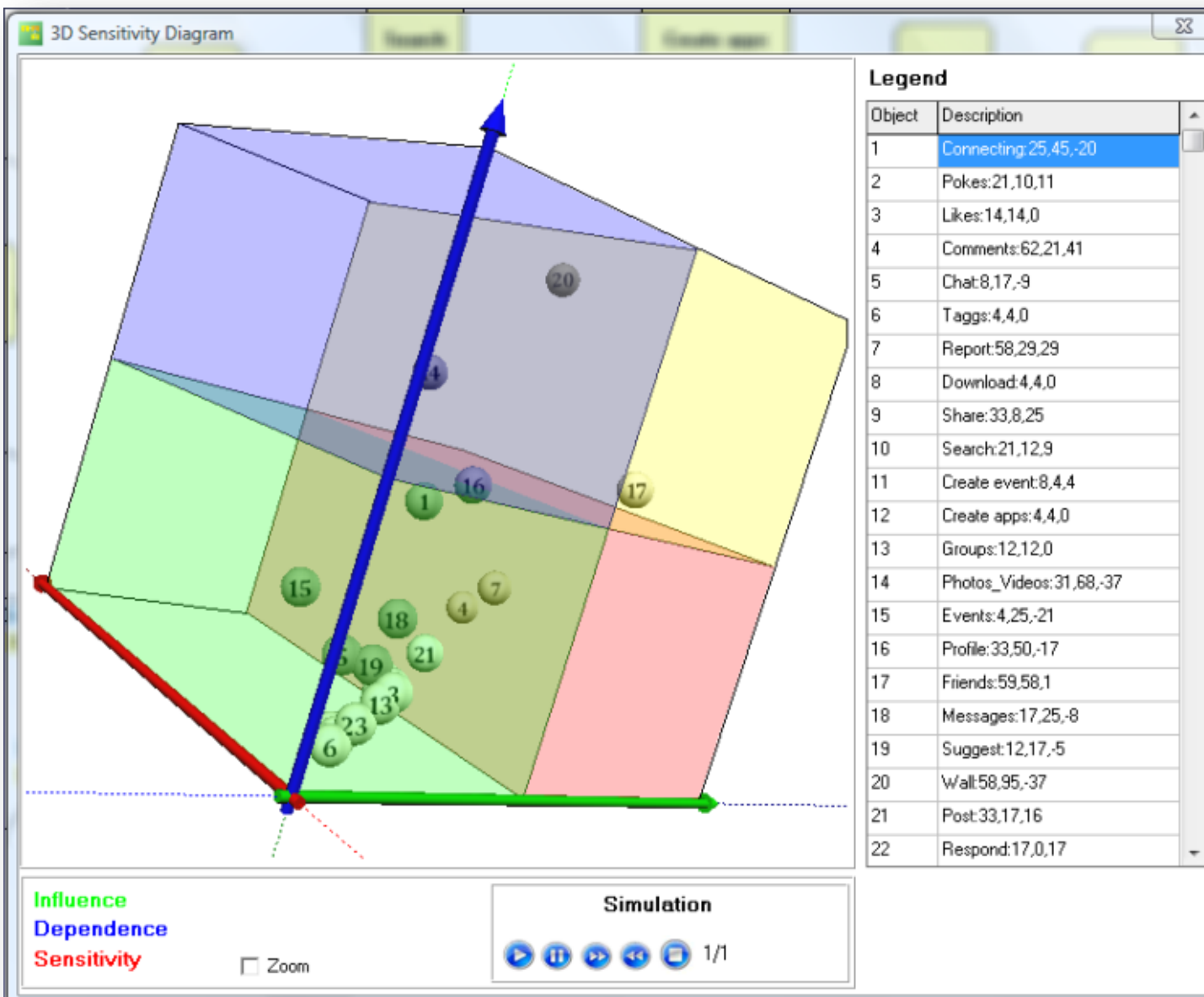
Methodological Context

I-SCIP®

Minchev & Petkova, 2010



Resulting Classification from the Model



Objects Classification:

- Critical: Friends – '17'
- Passive: Photos_Videos, Profile, Wall – '14', '16', '20'
- The rest are buffering 😊

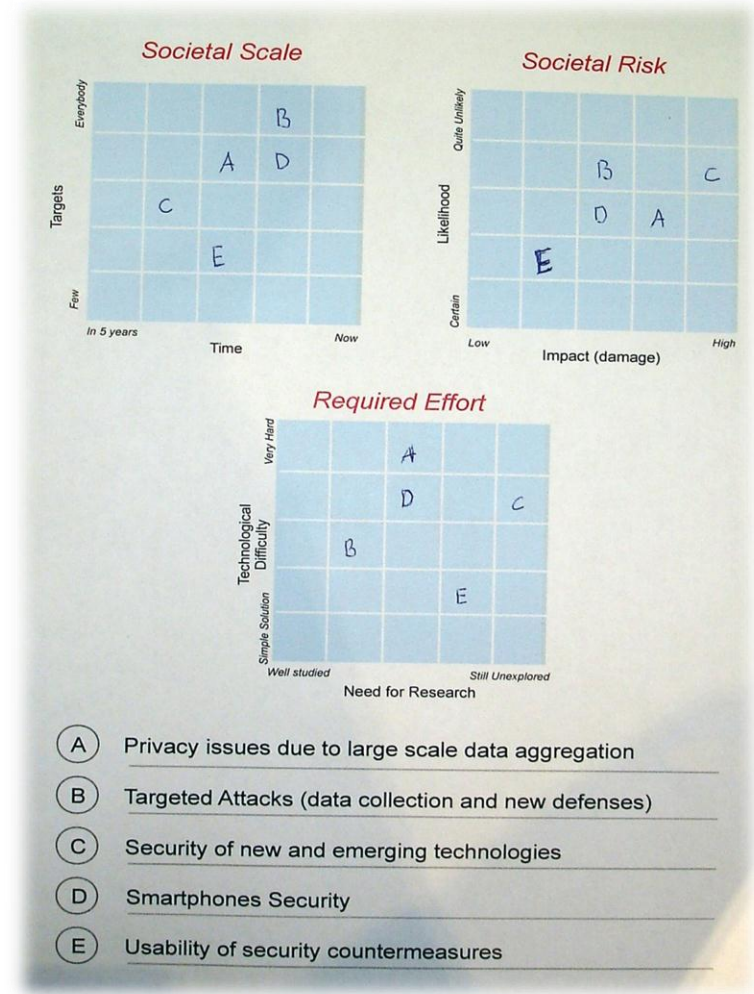
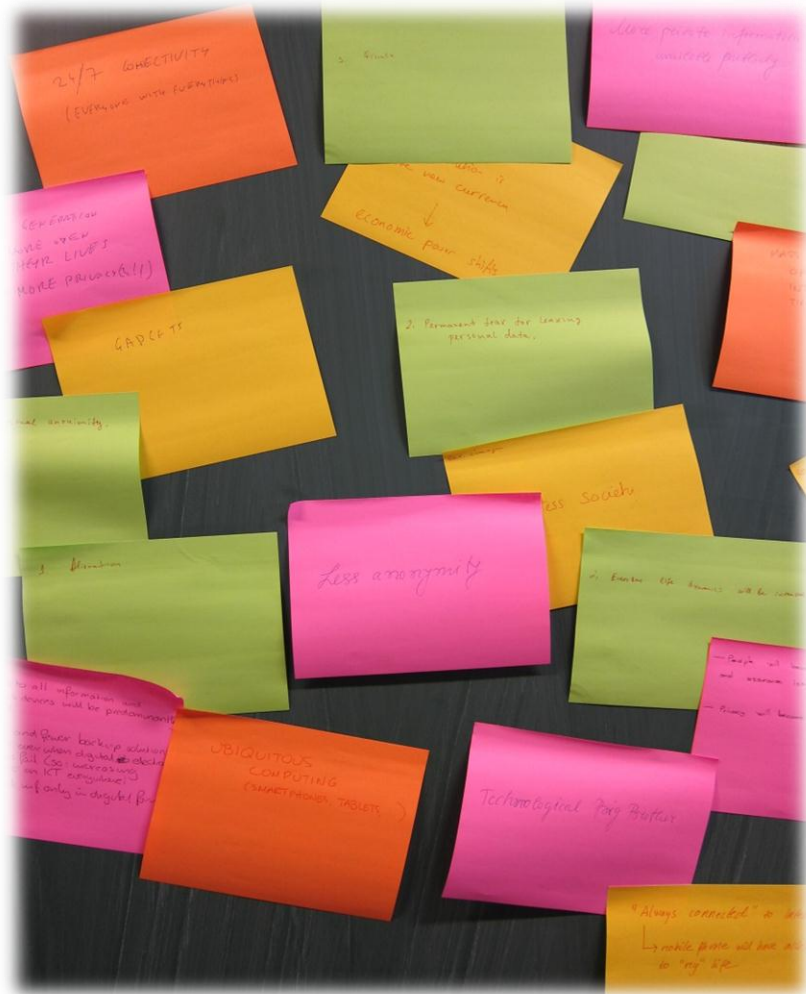
But how certain we are?

- **Since 2012 the new 'Timeline' view is combining 'Wall' and 'Profile' elements but is still optional;**
- **'Timeline' view is presenting the information in a more visible way;**
- **The 'Subscribe' option has recently appeared (Sept, 2011);**
- **All these results are subjective due to the experts' knowledge usage;**
- **We do not have complete data about all Facebook changes...**

Some Examples of Facebook Hidden Threats



Some New Cyber Threats Surveys

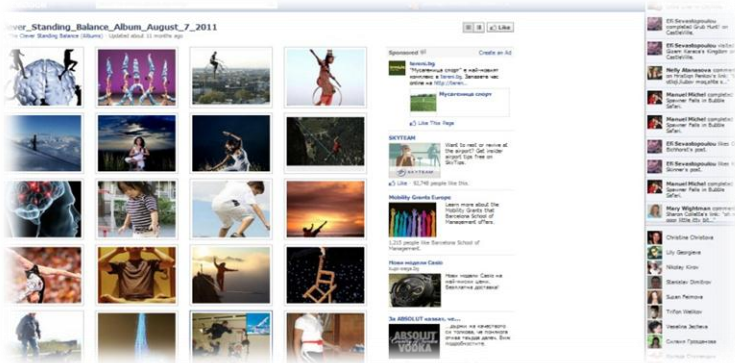


Participants



Experimental Set-Ups

Psychological monitoring



Physiological monitoring



facebook

NETLOG

Linked in

YouTube

twitter

WAZZUP



Some Initial Results

Psychological Monitoring Battery Key Elements



Eysenck Personality Scale



Von Zerssen Depression Scale

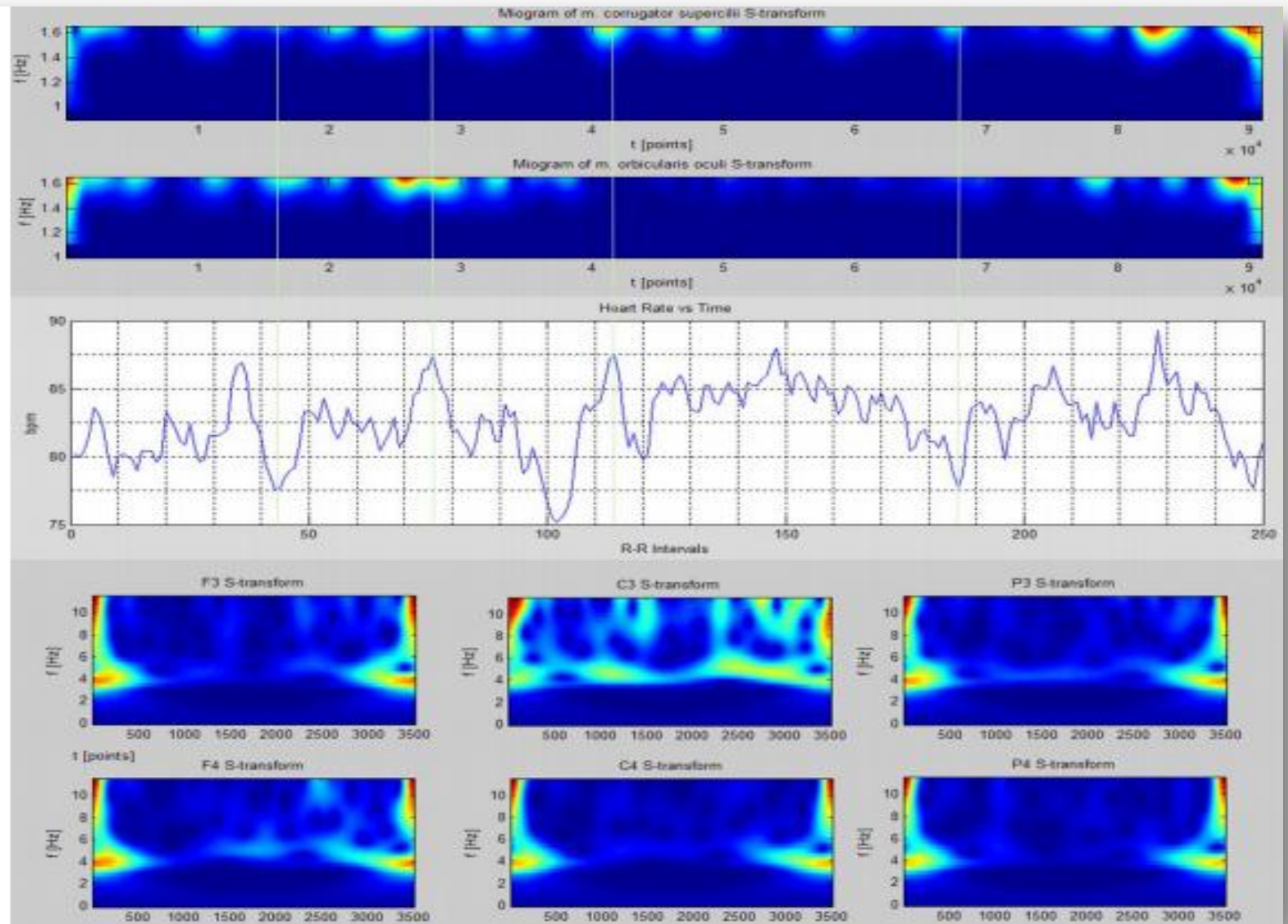


Zuckerman Sensations Seeking Scale

Some Physiological Results

Minchev & Gatev, 2012

Significant Results Illustration (HRV & L-R brain asymmetry)



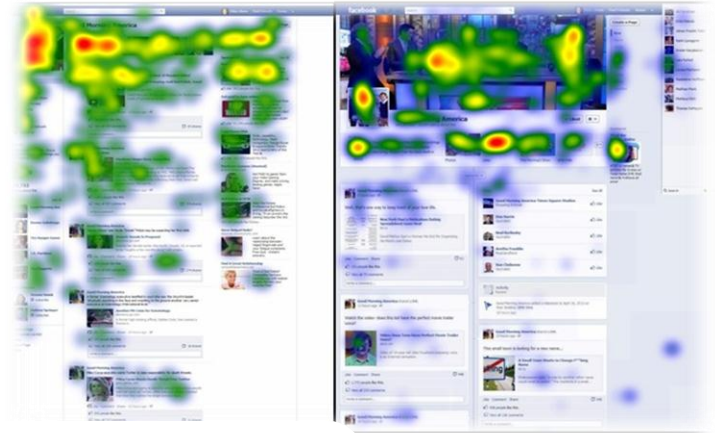
Discussion

The obtained initial results have shown an incomplete psychophysiological conclusions concerning emotions and behaviour dynamics of Facebook users.

Useful conclusions regarding our initial findings could be generalized around the following:

- 1) Extraverts are the typical Facebook users which are also intended to look for sensations due to hidden predisposition to depression states;
- 2) EEG is difficult for analysis and currently useful only by means of a quantitative measure of left/right hemisphere activation in selectable limited spectrum areas;
- 3) ECG R-R intervals are a useful parameter that could be concerned correlating with EMG data;
- 4) Cyberthreats are context (interface & platform) dependable;
- 5) The social engineering regarding Web 2/Web 3 obvious/hidden threats identification requires both cyber- and human factor-oriented approaches for correct studying.

What's next?



Acknowledgements

This study was partially supported by: *A Study on IT Threats and Users Behaviour Dynamics in Online Social Networks*, DMU03/22, Bulgarian Science Fund, Young Scientists Grant, 2011-2013, www.snfactor.com

The authors also express gratitude for the expert and methodological support to:

EU Network of Excellence in Managing Threats & Vulnerabilities for the Future Internet - SysSec, 2010-2014, www.syssec-project.eu

Cortical Regulation of the Quiet Stance during Sensory Conflict, TK 02/60, Bulgarian Science Fund, Young Scientists Grant, 2010-2014, www.cleverstance.com

Thank you for the attention



Questions

